



**New!**

Cotton  
Concept



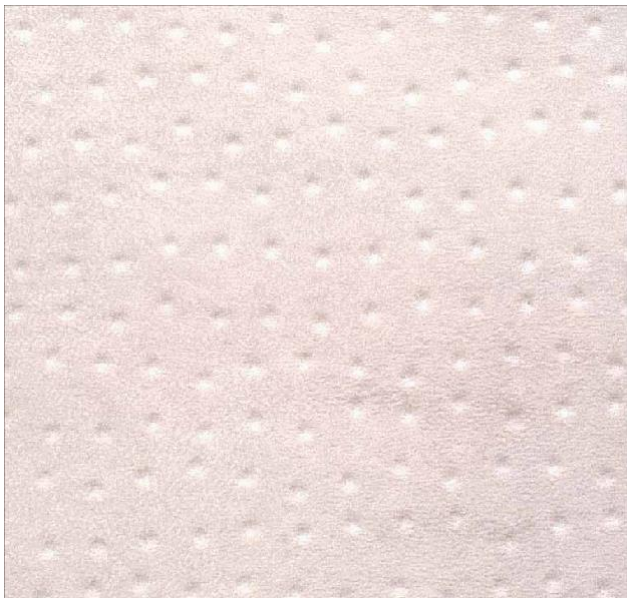
 **<100 µg/m³\***  
**Better Indoor  
Air Quality**  
\*TVOC AT 28 DAYS

**PTHALATE  
FREE  
Technology**  


**EXCLUSIVE  
260**  
2014-2016  
Collection

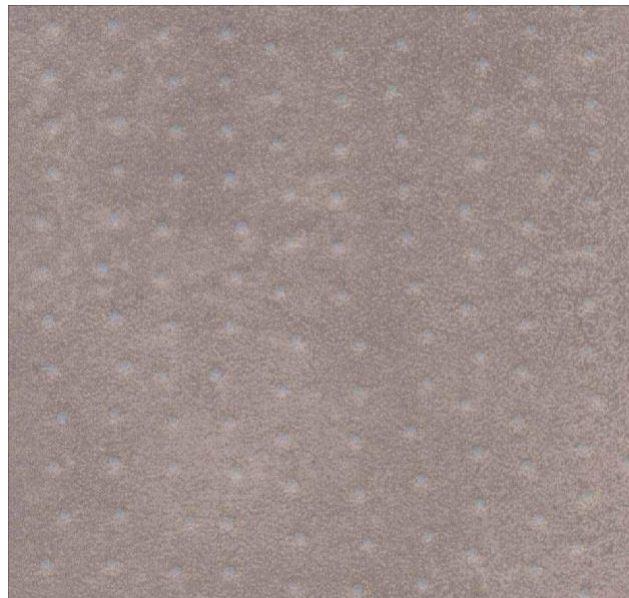
**NEW  
GENERATION  
FLOORING**

\*except recycled content



Cream

27010025



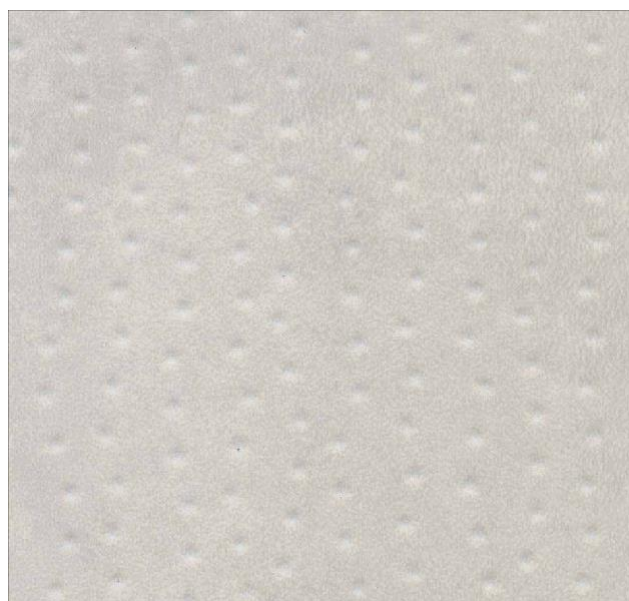
Mouse

27010026



Terra

27010027



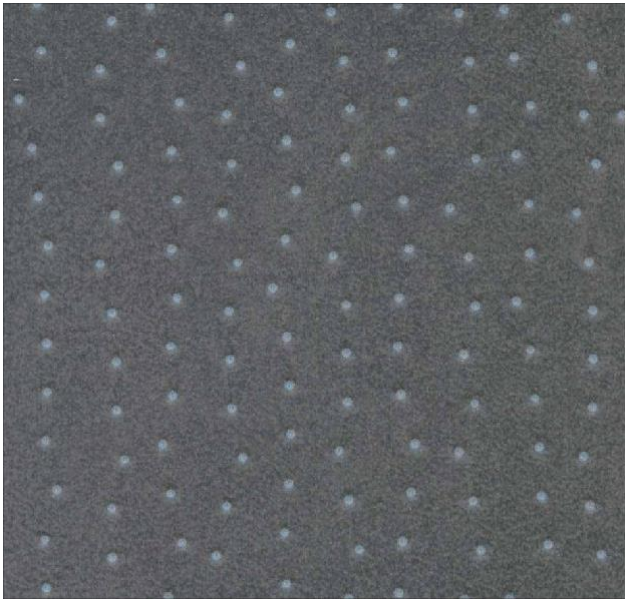
Agathe

27010022



Pearl

27010023



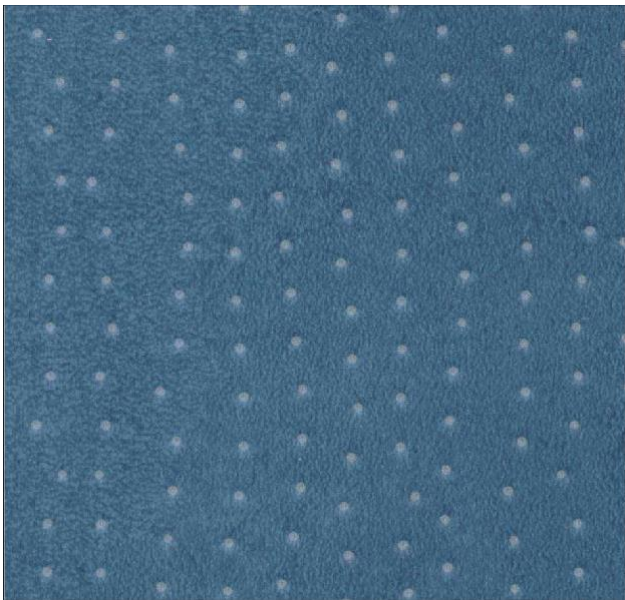
Graphite

27010024



Azure

27010021



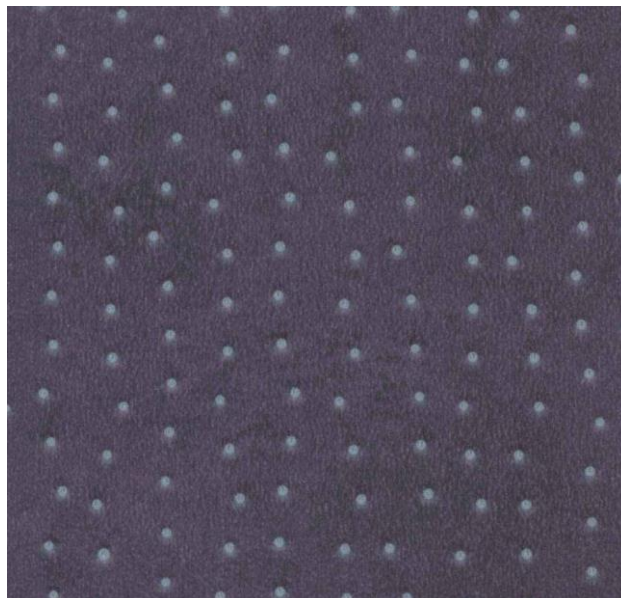
Ocean

27010020



Lilac

27010018



Ruby

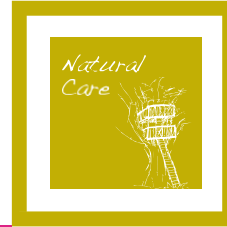
27010019

Vinyl Collection

# EXCLUSIVE 260

- > Improved indoor environment and air quality
- > Trendy designs
- > Easy installation and maintenance

- Walking & acoustic comfort
- A poetic mix of graphic patterns and soft material



EN 426	EN 434	ISO 105/B02	Chemical resistance	EN 1815	EN 660-2	Recyclable
4 + 3 + 2	≤ 0.40%	≥ 6	OK	≤ 2Kv	T	OK



EN 685 Class of use Residential	EN 685 Class of use Commercial	EN 428 (mm)	EN 429 (mm)	EN 430 (kg/m <sup>2</sup> )	EN 426 (m)	EN 433 (mm)	EN 13501-1	ISO 717/2	EN 425	DIN 51130	EN 12524
		ca. 2.60	ca. 0.25	ca. 1.69	ca. 30	≤ 0.35	B <sub>fl</sub> -s1	ca. 19 dB	-	R10	0.04 m <sup>2</sup> K/W

suitable for



Exclusive 260 - COTTON CONCEPT - 27010 63 002  
 Although the utmost care is taken, the data here given could be imprecise and liable to modifications of a technical nature. In its strive to improve its floor solutions, Tarkett reserves the right to modify their technical specifications, colours and materials at any moment and without prior notice.